



# RIPLLEY ENDOWED CE PRIMARY SCHOOL

We strive to be a 'peace-full' school that our whole community can be proud of, where we work together (share) through mutual reliance and support (trust) so that all can fulfil their potential (aspire) in a world where everyone's God-given talents, skills and experiences are recognised and valued (respect).

'Therefore encourage one another and build each other up, just as in fact you are doing' 1 Thessalonians 5:11

## WEEKLY NEWSLETTER— 15th October 2021

### DATES FOR THE DIARY

DATE	TIME	EVENT
18th & 19th Oct	TBC	School Photos *
21st Oct	1pm-6pm	Parent Consultations
22nd Oct	School Closed	Staff Training Day
25th-29th Oct	School Closed	Half Term
1st Nov	School Open	Autumn 2 Term/Nasal Flu Vaccinations
8th Nov	8.45am	Bags 2 School
19th Nov	All day	Children in Need Fundraiser
WC 22nd Nov	All week	Enrichment Week - Spain

### ATTENDANCE

	Swallows	Robins	Falcons
Week	92.5%	99.17%	96.15%
Year	95.08%	98.85%	96.95%

Each week we publish the attendance from September for each class. Our aspirational target for each class is 97%.

### WORSHIP THEME OF THE WEEK

## A WISE HEART

This week we explore what can get in the way of our relationship with God

\* School Photos will be individual and siblings. These photos will take place across two days.

## ★ S.T.A.R. of the Week ★

Congratulations to all our stars of the week who have demonstrated our 'Aspire' Star qualities this week.

**Falcons:** Henry for 'Aspire'. Henry, you are working so well in all areas of the curriculum. You have super writing ideas, including vocabulary and connectives; you are organised and quick at your maths work; your contributions in history, PSHE, RE and reading show excellent listening and thinking skills. You're not bad at PE either!

**Robins:** Lewis for 'Aspire'. We are so impressed with your focus and aspirational attitude Lewis! It's a big step up to KS2, and you are showing determination, enthusiasm and a real enjoyment in your learning. We are very proud of you; keep it up!

**Swallows:** Olivia for 'Aspire'. Olivia always works really hard but this week she has worked particularly hard in Phonics! Well done Olivia and keep it up.

**Ducklings:** Henry C for 'Aspire'. This week Henry has worked hard joining in with the different learning areas. You have impressed me this week working hard to write your name. Well done Henry!

## Weekly Awards

### The House Captains Award this week go to....

**Nidd** - Jacob for being particularly kind to his brother (Respect)

**Ingilby** - Isla for her focused approach in maths (Aspire)

**Brimham** - Max for looking after people who are new to our school (Respect)

### The House Points Award this week go to....

Falcons - Gracie-May (**Brimham**)

Robins - Tommy (**Brimham**)

Swallows - Jacob (**Nidd**)

Ducklings - Henry C (**Nidd**)

**SMIRF awards go to** - Isla for completing Jupiter; Jack for completing Saturn; Aoife for completing Earth.



# RIPLLEY ENDOWED CE PRIMARY SCHOOL

## Weekly Updates and Reminders

### Childcare Vouchers

For those paying their Pre-School and Comet Club fees by Childcare Vouchers, please be advised that we are aware there is a delay to your balance being adjusted to reflect the payments on ParentMail. Unfortunately we are in the process of changing over to online banking, but in the meantime we have to reconcile each payment against the paper statements. We have not had a paper statement since June, therefore unable to correct the balances. Please be assured that as soon as we are able, the balances will be adjusted to reflect your payments. Many thanks for your patience on this matter.

### Safeguarding

A PDF copy of the Apple Guided Access is attached to this weeks Newsletter. This ties in with what our children have been learning this week and explains the benefits of enabling guided access on your device.

Whether it's a writing app, drawing app, music app, math app, or a story, video, or reading app, Guided Access helps make sure that all attention remains only on that app. It also prevents you from accidentally exiting to the Home screen or another app when you don't mean to.



**If you are concerned about a child's welfare please contact: Mrs Sue McGrogan or Mrs Anya Walker - Designated Safeguarding Leads on 01423 770160.**

### Friends of Ripley School

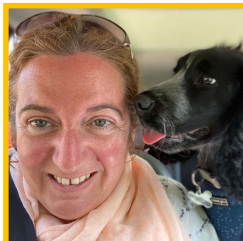
Next week we will be running a 'guess the number of sweets in the jar' competition. Entry will be 50p a go and 1 go per person. Children can bring their 50p in Monday –Thursday next week and the winner will be announced on Thursday afternoon.

### Meet the Team

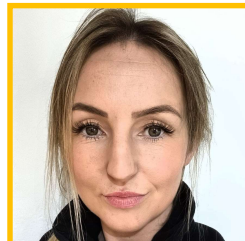
There have been quite a few changes within the team, so we thought it would be a good opportunity to introduce ourselves. As always, if you would like to join friends or help in anyway, please get in touch. Everyone is welcome to join our meetings and share their fundraising ideas.



Jessica - Chair



Ellie - Vice Chair



Tracey - Treasurer



Rachel - Assistant Treasurer



Georgina - Secretary